



Santa Cruz NRCD – Rangeland Monitoring Report Fall 2022

Submitted: 2/22/2023

Amended: 2/28/2024

Work Performed by Jim Koweek

Arizona Revegetation & Monitoring Co.

217 Lyle Canyon Rd, Elgin AZ 85611

520-455-5780

Background information:

This partnership originally started when the NRCS had Technical Service Provider (TSP) funding within Arizona that the NRCD's could apply for. The first agreement, signed between the SCNRCD and NRCS, was in 2007. The Santa Cruz NRCD, as part of their agreement with NRCS, would host technical workshops and assist the NRCS with their vegetation monitoring workload by reading transects within the District and providing them with the data that was collected. In 2007, 7 transects were recorded as being read. In 2008 a 5 year agreement between the SCNRCD and NRCS was signed in which every year 20 transects would be read, 4 workshops would be held, quarterly newsletters published along with promoting other outreach. This TSP agreement was completed in 2012. Since then the SCNRCD has taken the initiative to continue this monitoring effort by hiring a vegetation specialist to read transects each year. Starting in 2008, Jim Koweek has been assisting the SCNRCD and the NRCS collect monitoring data within the SCNRCD.

In the early fall of each year the SCNRCD reaches out to the NRCS' Tucson Field Office to receive a list of transects within the District that they could use assistance with. This has freed up valuable time for the NRCS staff to conduct conservation planning activities to enhance our services in the area as well as helping to ensure there is a continuation of data sets collected on these long established transects. Typically, the SCNRCD funds the reading of 20-25 transects per year.

2022 Monitoring Season: September 2022 – December 2022

This monitoring season Jim completed monitoring on 20 transects.

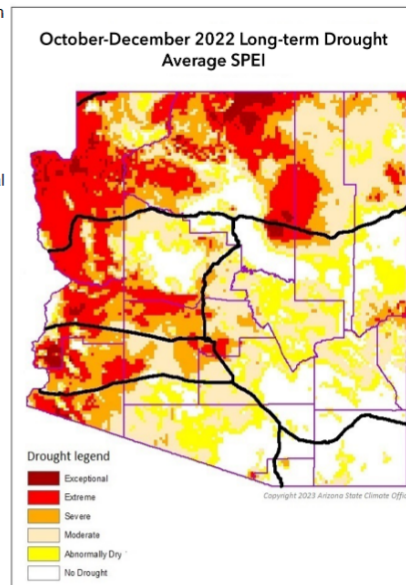
Monitoring completed in the Fall of 2022

<u>Ranch</u>	<u>Date</u>	<u>Pasture or KA</u>
San Rafael	10/24	KA-2, KA-6
Rose Tree	11/18, 11/23, 12/9	KA-3, KA-4, BA-2
Schock	9/27	KA-1, KA-2
Santa Fe	11/2	KA-1, KA-2
Kunde	10/31	Flux C4
Harshaw	10/31	Middle C3T2
Vera Earl	12/19	KA-5, KA-6, KA-8
Agua Caliente	11/28	KA-1
Open Cross	10/18 & 10/19	Middle, North C5, Papago, Pinto T2, S Mountain

QUARTERLY DROUGHT STATUS UPDATE: OCTOBER-DECEMBER 2022

Extreme (D3) long-term drought remained entrenched in western counties, most of Coconino County, and portions of northern Maricopa and central Navajo counties. Areas of Severe (D2) long-term drought extended around the periphery of these areas and southern Apache County. Small portions of Exceptional (D4) long-term drought continued in La Paz, Mohave, and Coconino counties. Much of central Yavapai, central Apache, southern Navajo, eastern Pinal, central and eastern Pima, and most of Gila, Graham, Greenlee, Cochise, and Santa Cruz counties were Abnormally Dry (D0) or without long-term drought. Moderate (D1) long-term drought continued in northern Apache and Navajo counties, portions of Maricopa, and western Pinal and Pima counties.

La Niña conditions are in the initial stages of deteriorating with better than a 70% chance of El Niño Southern Oscillation (ENSO) neutral by the spring. Despite the La Niña, odds are tilted towards a continuation of wetter weather in January, although the longer-term outlook through the spring suggests drier than normal weather is somewhat more likely.



This report was prepared by the Arizona Drought Monitoring Technical Committee, January 12, 2023. Arizona's long-term drought status map is updated quarterly and the next update in early April, it will reflect the conditions of January, February, and March. The long-term drought status for each watershed is determined by comparing the precipitation and streamflow percentiles for the past 24, 36, 48 and 60 months to a 40-year historical record.

<https://new.azwater.gov/drought/drought-status>

Amendment:

See attached spreadsheets

Submitted By:

Alisha Phipps

Rangeland Management Specialist, NRCS Tucson Field Office

alisha.phipps@usda.gov
